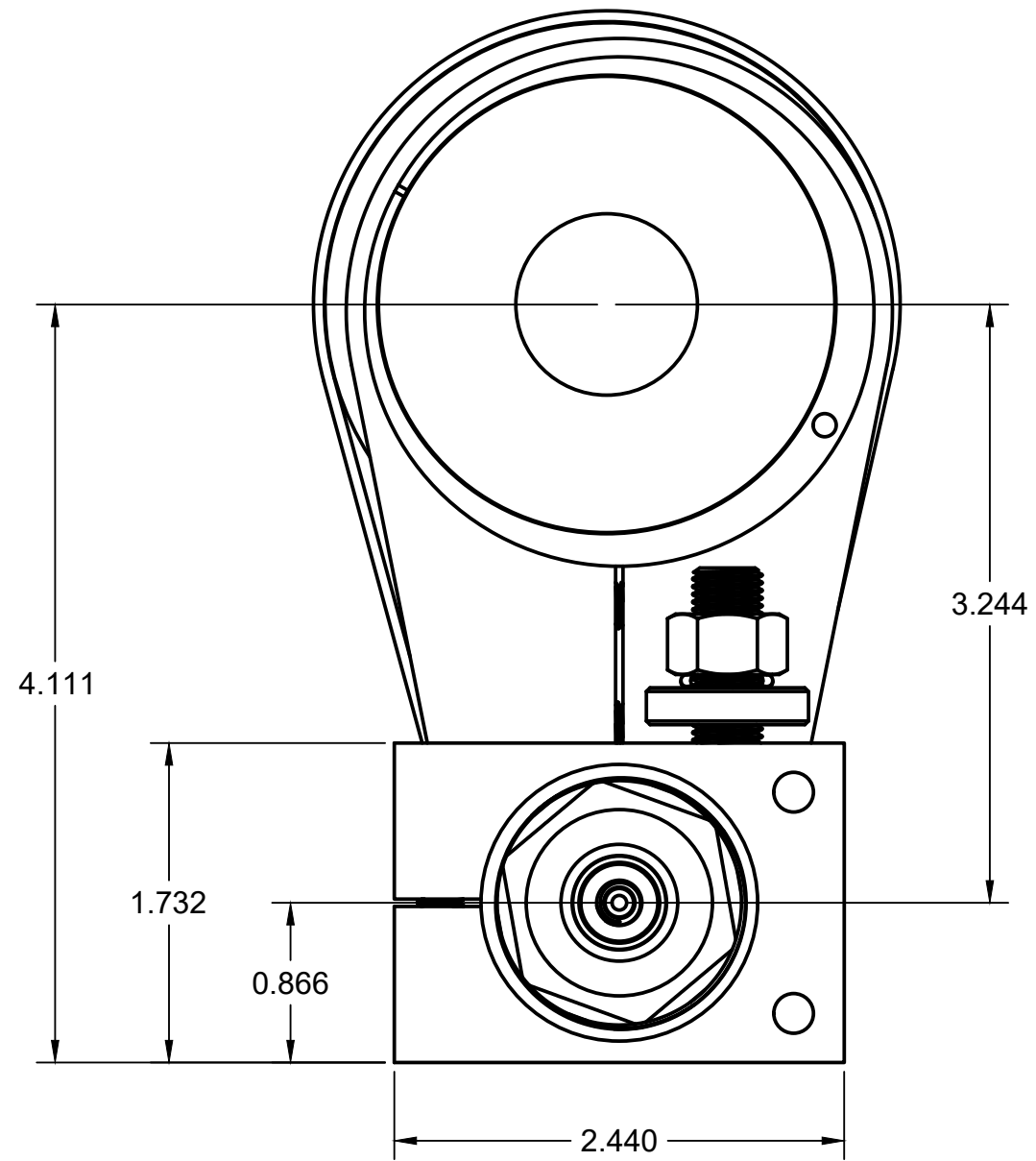
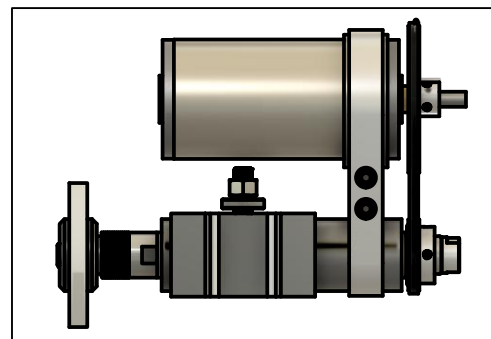
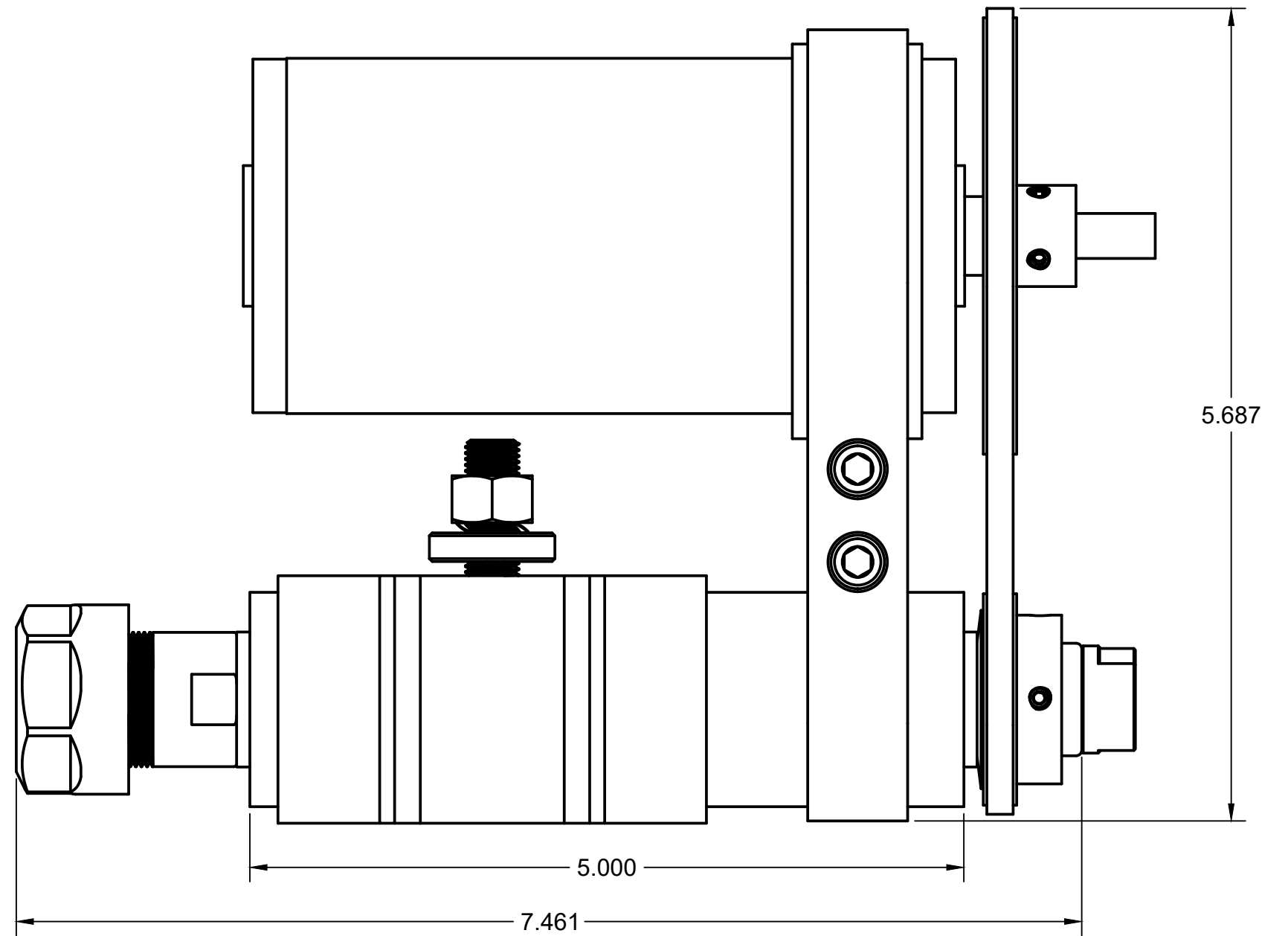


|                                  |           |        |           |
|----------------------------------|-----------|--------|-----------|
| PROJECT                          |           |        |           |
| <b>CLOUGH42 Toolpost Grinder</b> |           |        |           |
| TITLE                            |           |        |           |
| <b>Grinder Assembly</b>          |           |        |           |
| APPROVED                         | SIZE      | CODE   | DWG NO    |
| CHECKED                          | B         |        |           |
| DRAWN James Clough 8/12/2017     | SCALE 1:1 | WEIGHT | SHEET 1/7 |



Shown with optional ER20 Collet Nut

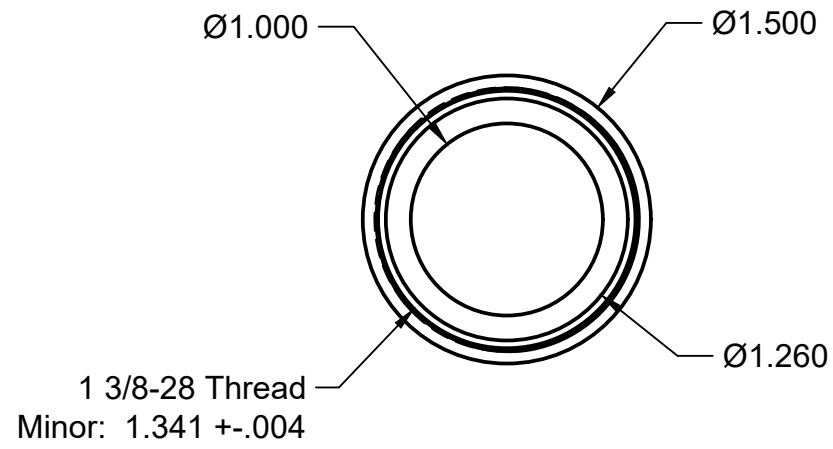
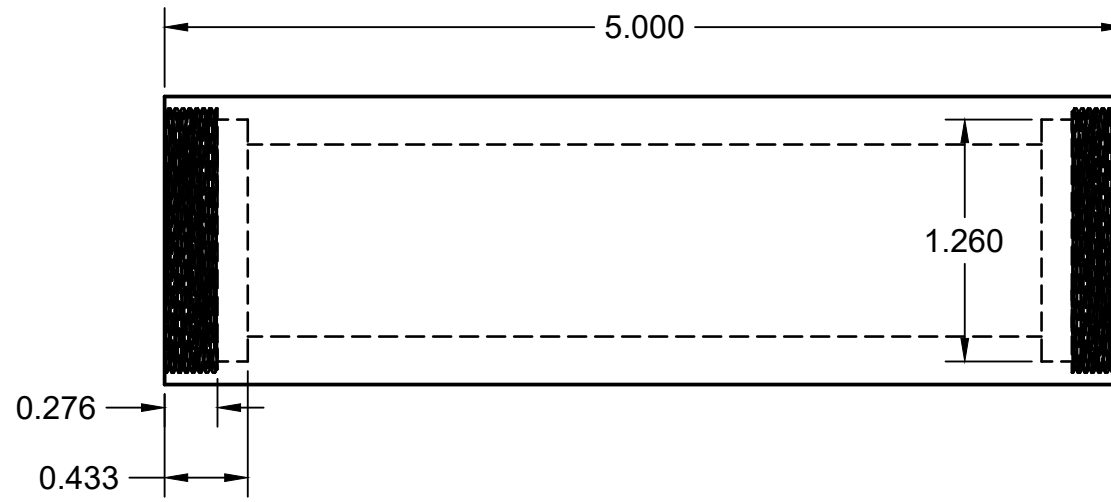


PROJECT  
**CLOUGH42 Toolpost Grinder**

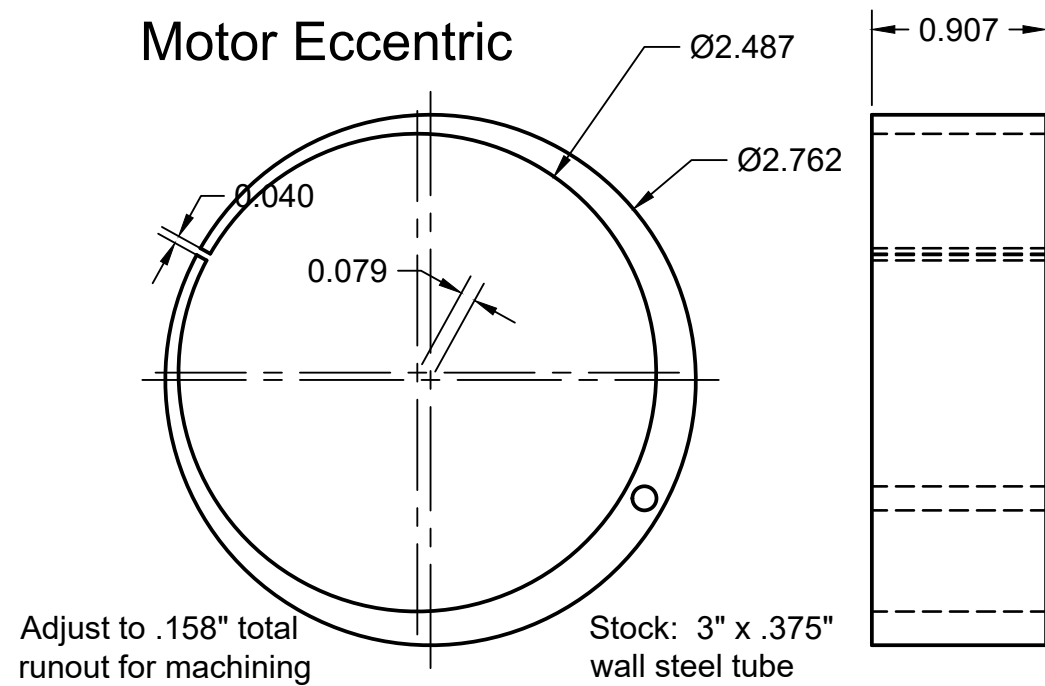
TITLE  
**Grinder Assembly**

|                              |           |        |           |     |
|------------------------------|-----------|--------|-----------|-----|
| APPROVED                     | SIZE      | CODE   | DWG NO    | REV |
| CHECKED                      | B         |        |           |     |
| DRAWN James Clough 8/12/2017 | SCALE 1:1 | WEIGHT | SHEET 2/7 |     |

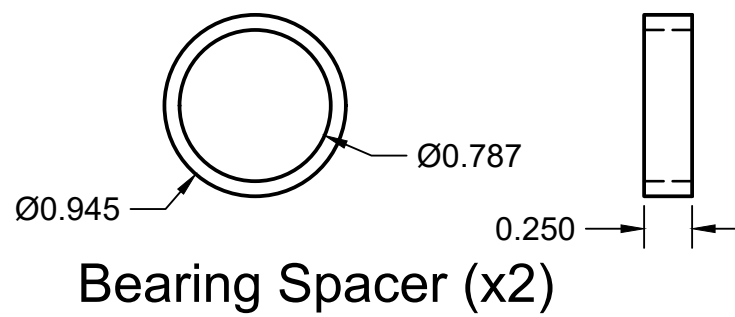
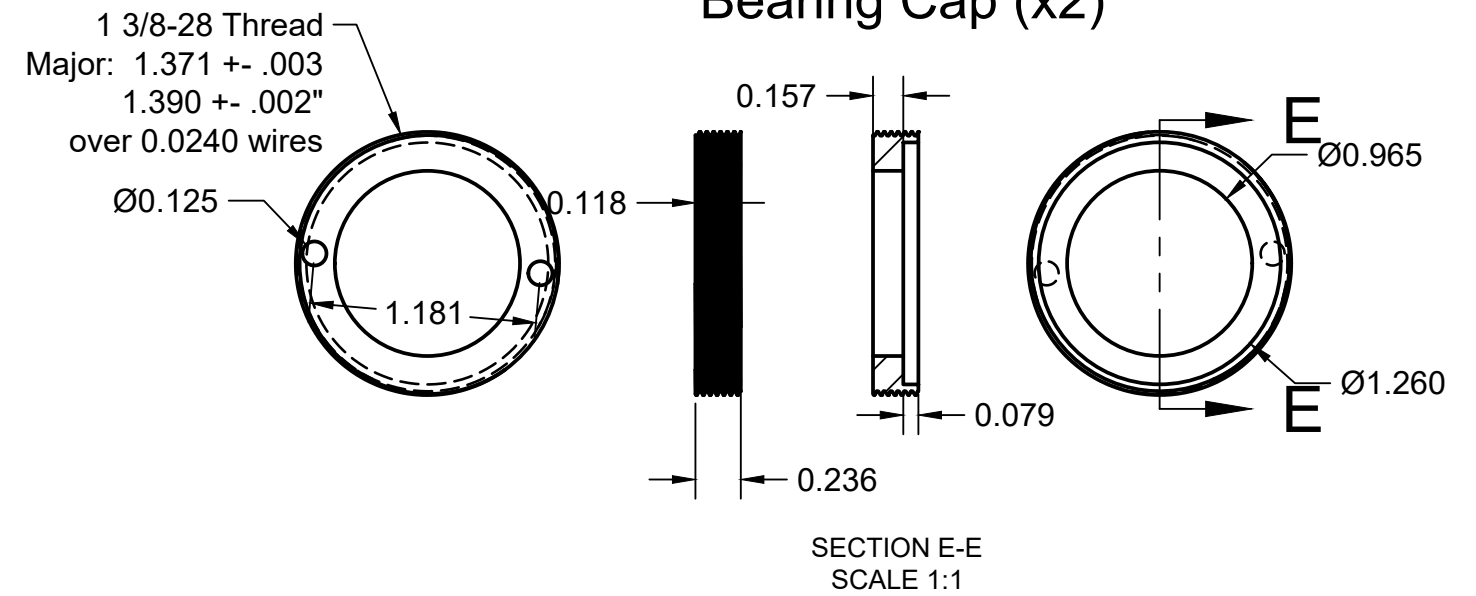
### Spindle Housing



### Motor Eccentric

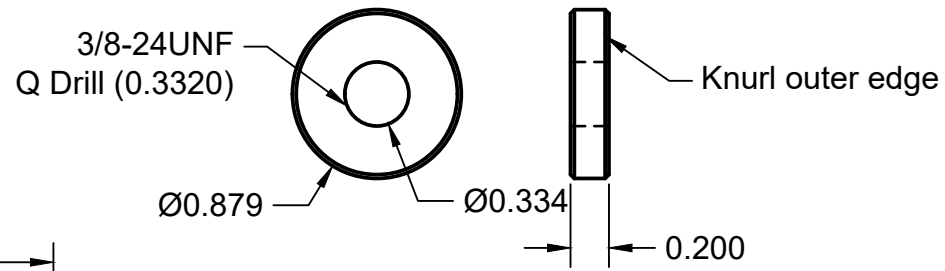


### Bearing Cap (x2)

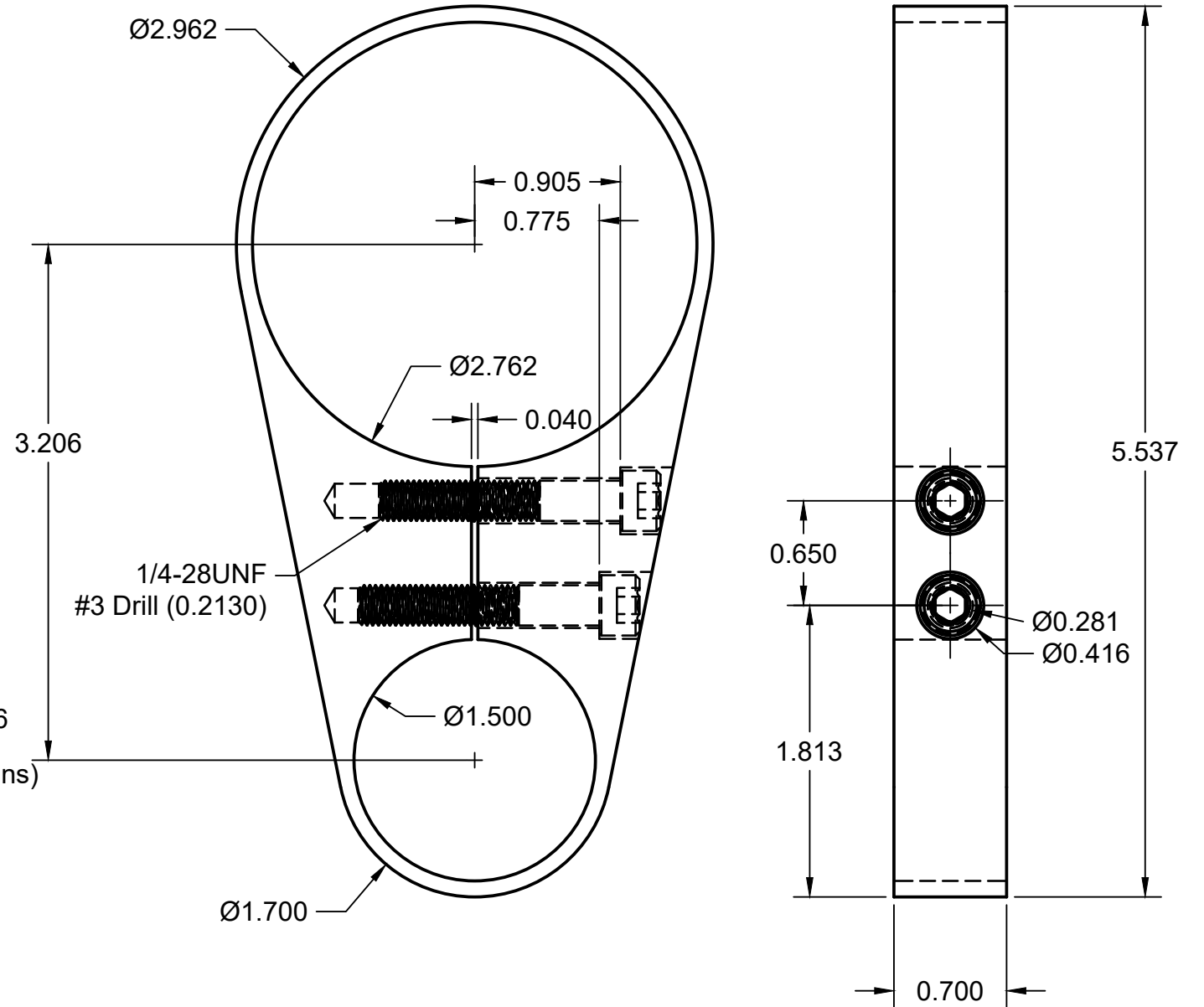


|                              |  |        |           |     |
|------------------------------|--|--------|-----------|-----|
|                              | PROJECT<br><b>CLOUGH42 Toolpost Grinder</b>          |        |           |     |
|                              | TITLE<br><b>Housing, Caps<br/>Spacers, Eccentric</b> |        |           |     |
| APPROVED                     | SIZE   | CODE   | DWG NO    | REV |
| CHECKED                      | B  |        |           |     |
| DRAWN James Clough 8/12/2017 | SCALE 1:1  | WEIGHT | SHEET 3/7 |     |

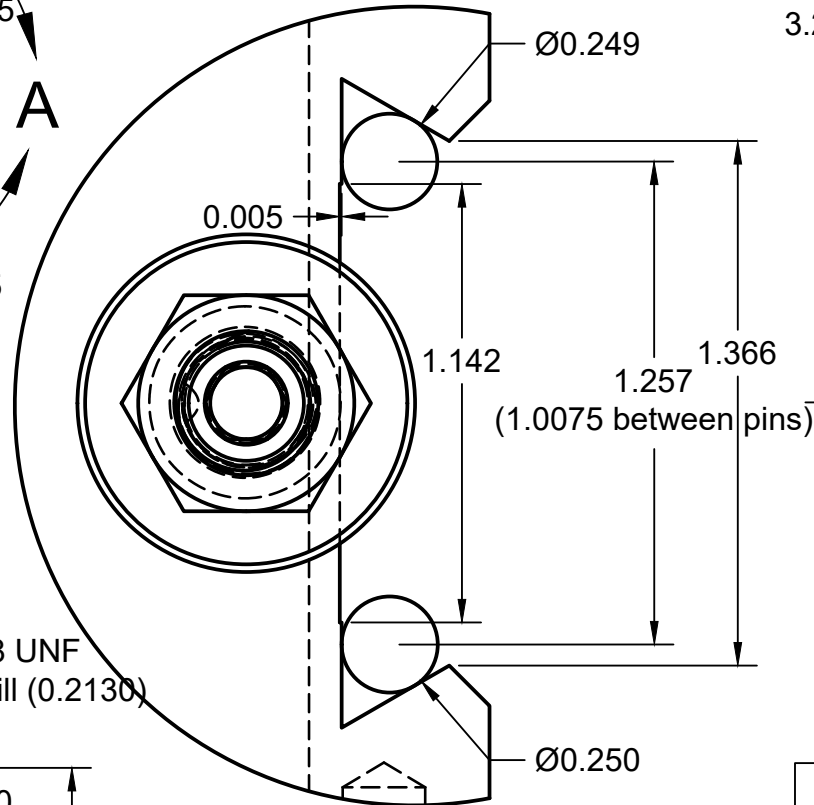
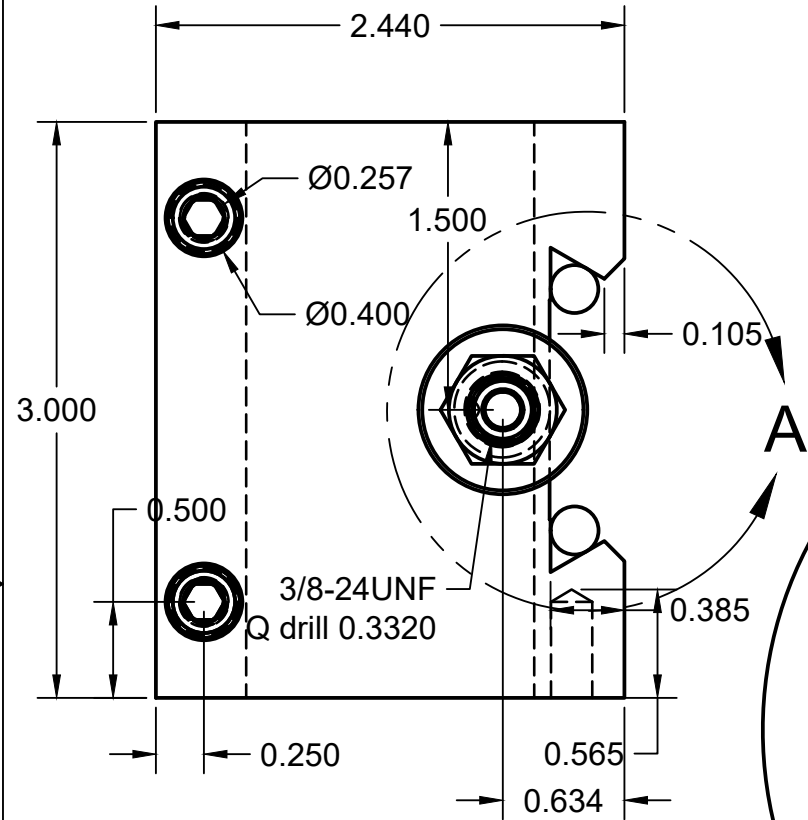
### Height Adjuster



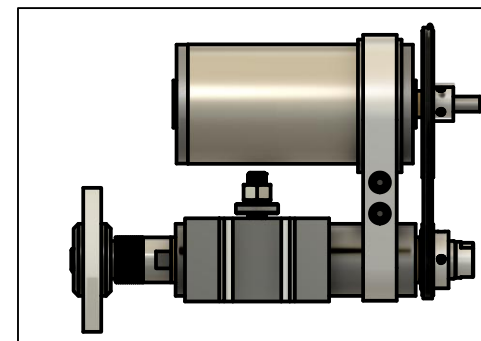
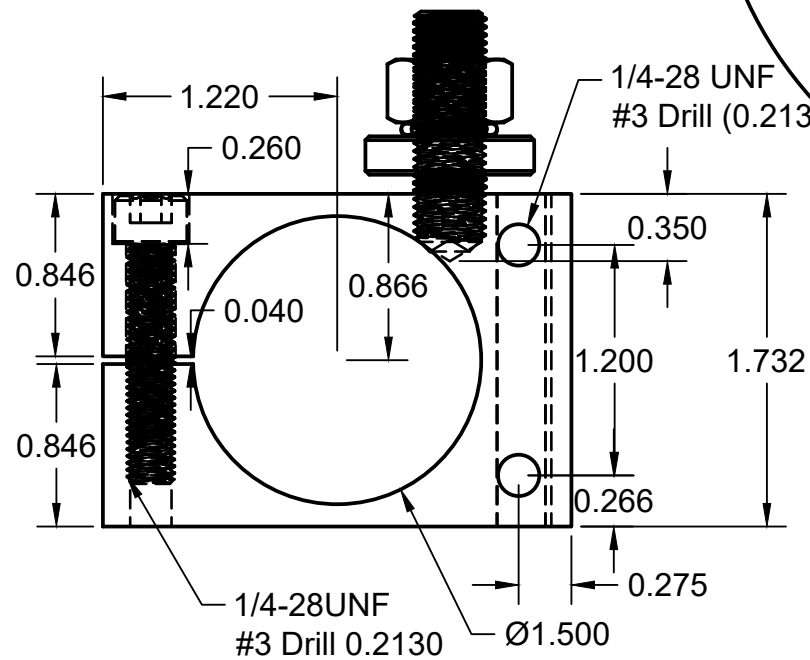
### Motor Clamp



### Toolpost Clamp



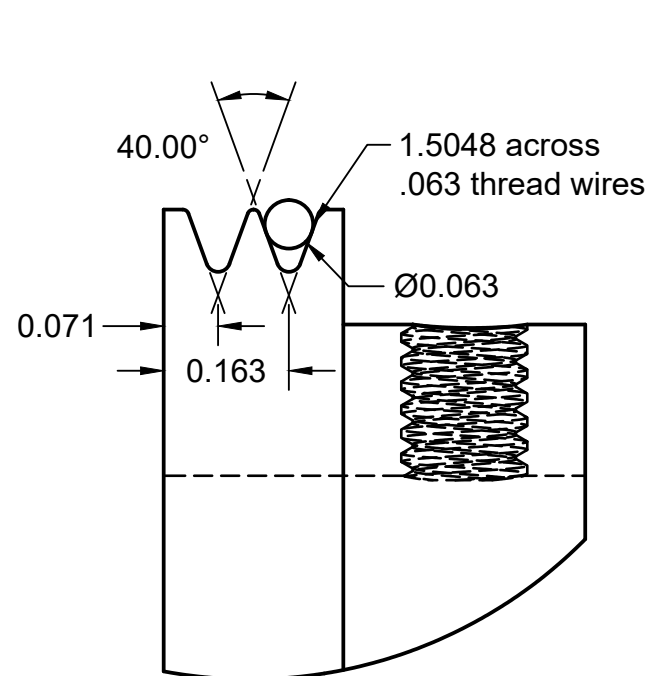
**DETAIL A  
SCALE 2:1**



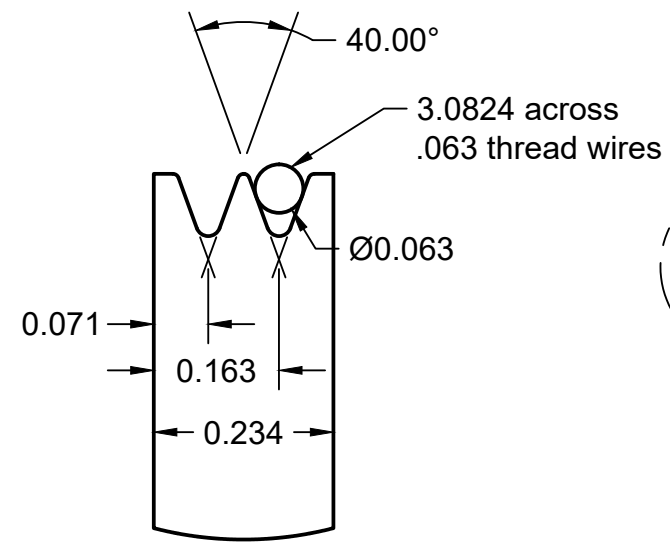
PROJECT  
**CLOUGH42 Toolpost Grinder**

TITLE  
**Toolpost Clamp  
Motor Clamp**

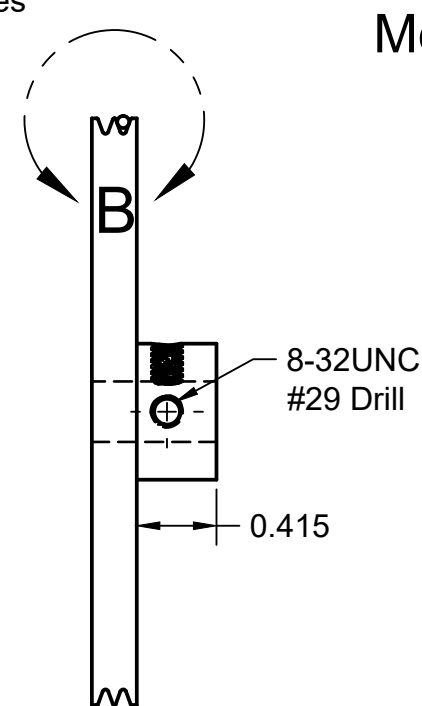
|                              |           |        |           |     |
|------------------------------|-----------|--------|-----------|-----|
| APPROVED                     | SIZE      | CODE   | DWG NO    | REV |
| CHECKED                      | B         |        |           |     |
| DRAWN James Clough 8/12/2017 | SCALE 1:1 | WEIGHT | SHEET 4/7 |     |



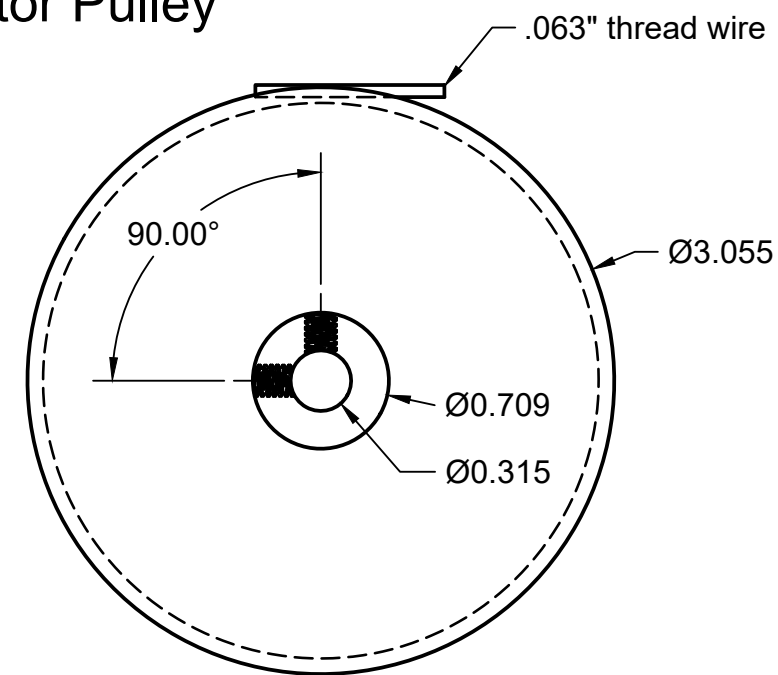
**DETAIL C**  
**SCALE 4:1**



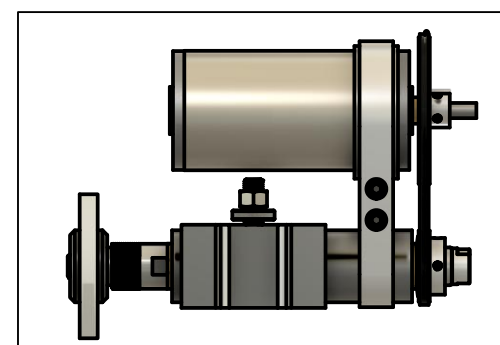
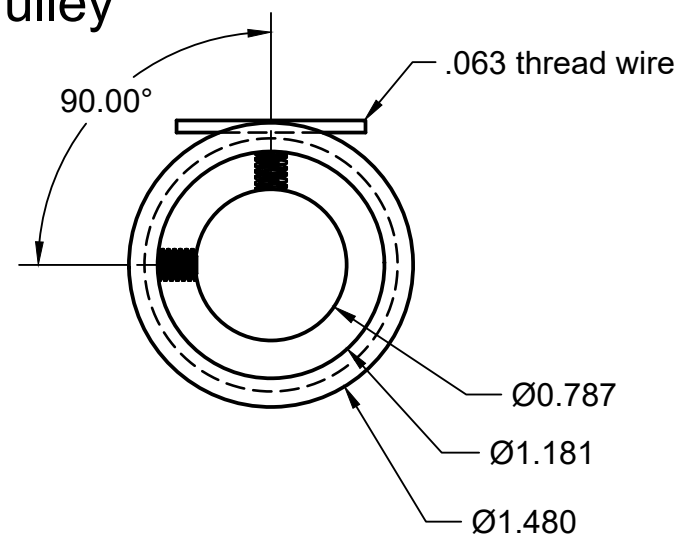
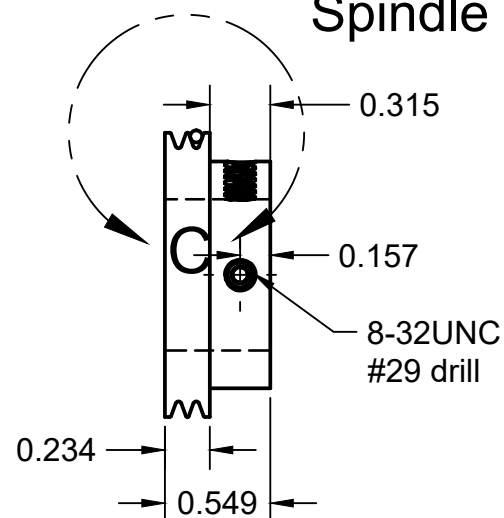
**DETAIL B**  
**SCALE 4:1**



**Motor Pulley**



**Spindle Pulley**



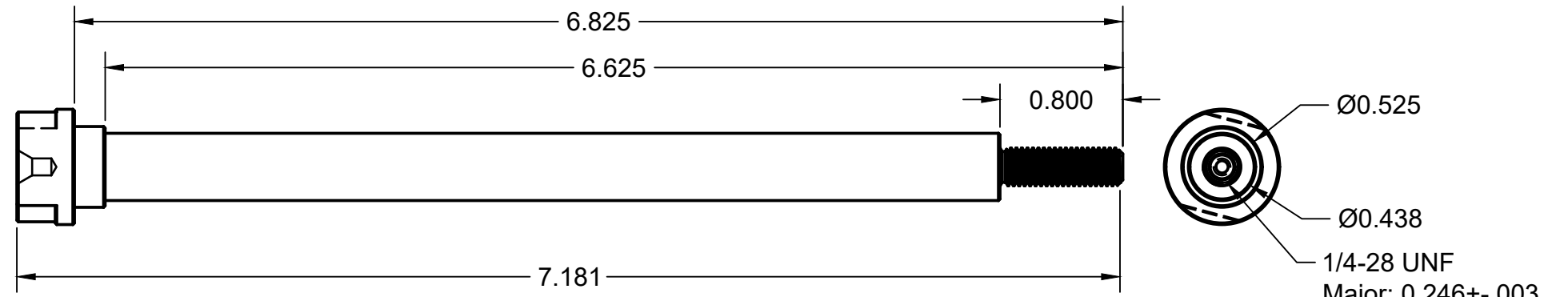
PROJECT  
**CLOUGH42 Toolpost Grinder**

TITLE  
**Pulleys**

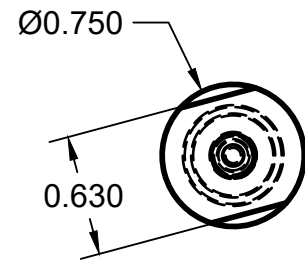
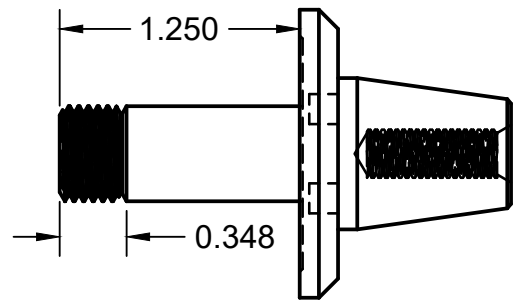
|                              |           |        |           |     |
|------------------------------|-----------|--------|-----------|-----|
| APPROVED                     | SIZE      | CODE   | DWG NO    | REV |
| CHECKED                      | B         |        |           |     |
| DRAWN James Clough 8/12/2017 | SCALE 1:1 | WEIGHT | SHEET 5/7 |     |



### Drawbar

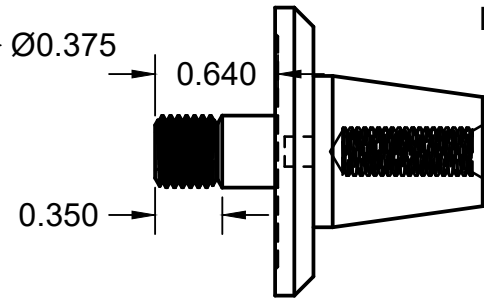
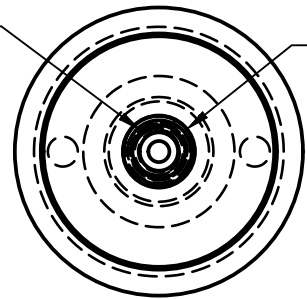


### 1/2" x 1" Arbor

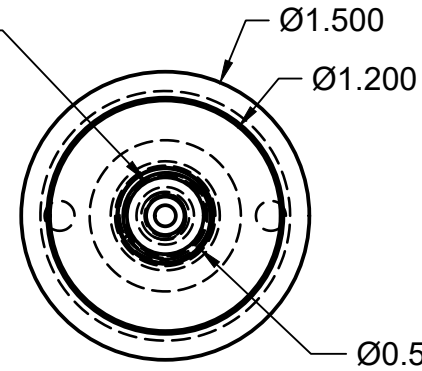


### 3/8" x 3/8" Arbor

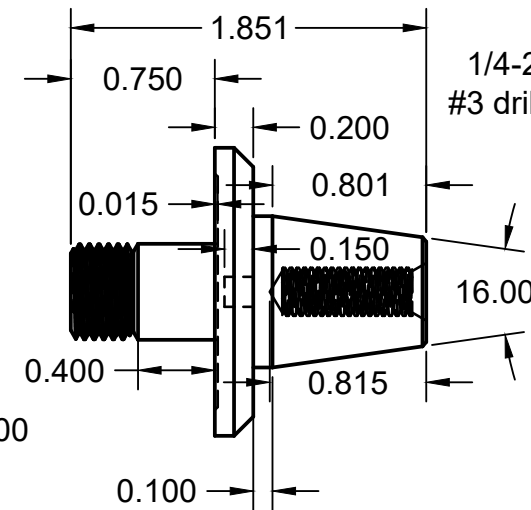
3/8-24 UNF  
Major: 0.374+-.004  
.381+-.002 over  
.0240 wires



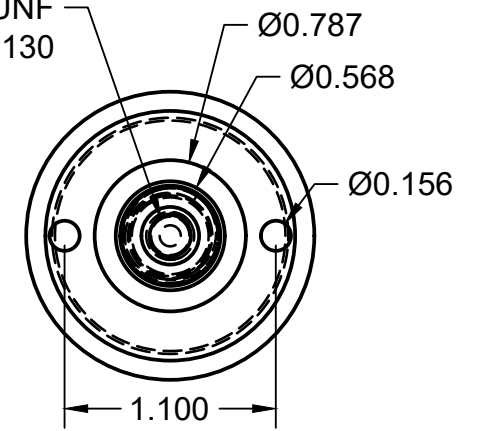
1/2-20 UNF  
Major: 0.495+-.004  
.508 +-.002 over  
.029 wires



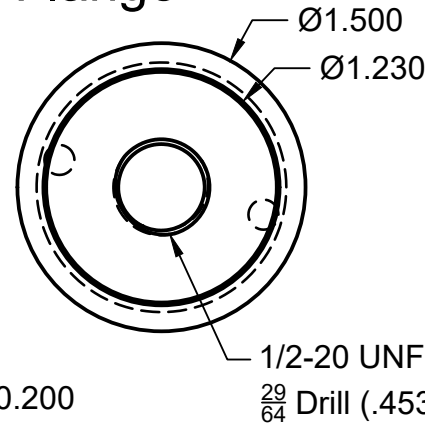
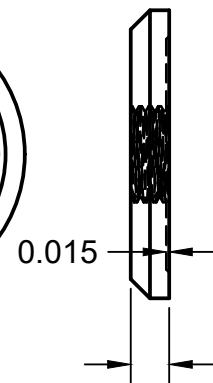
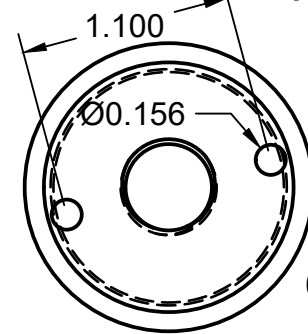
### 1/2" x 1/2" Arbor



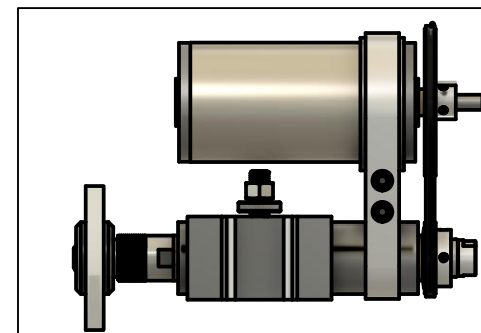
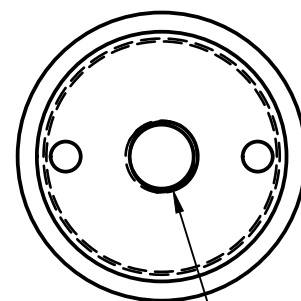
1/4-28 UNF  
#3 drill .2130



### 1/2" Arbor Flange



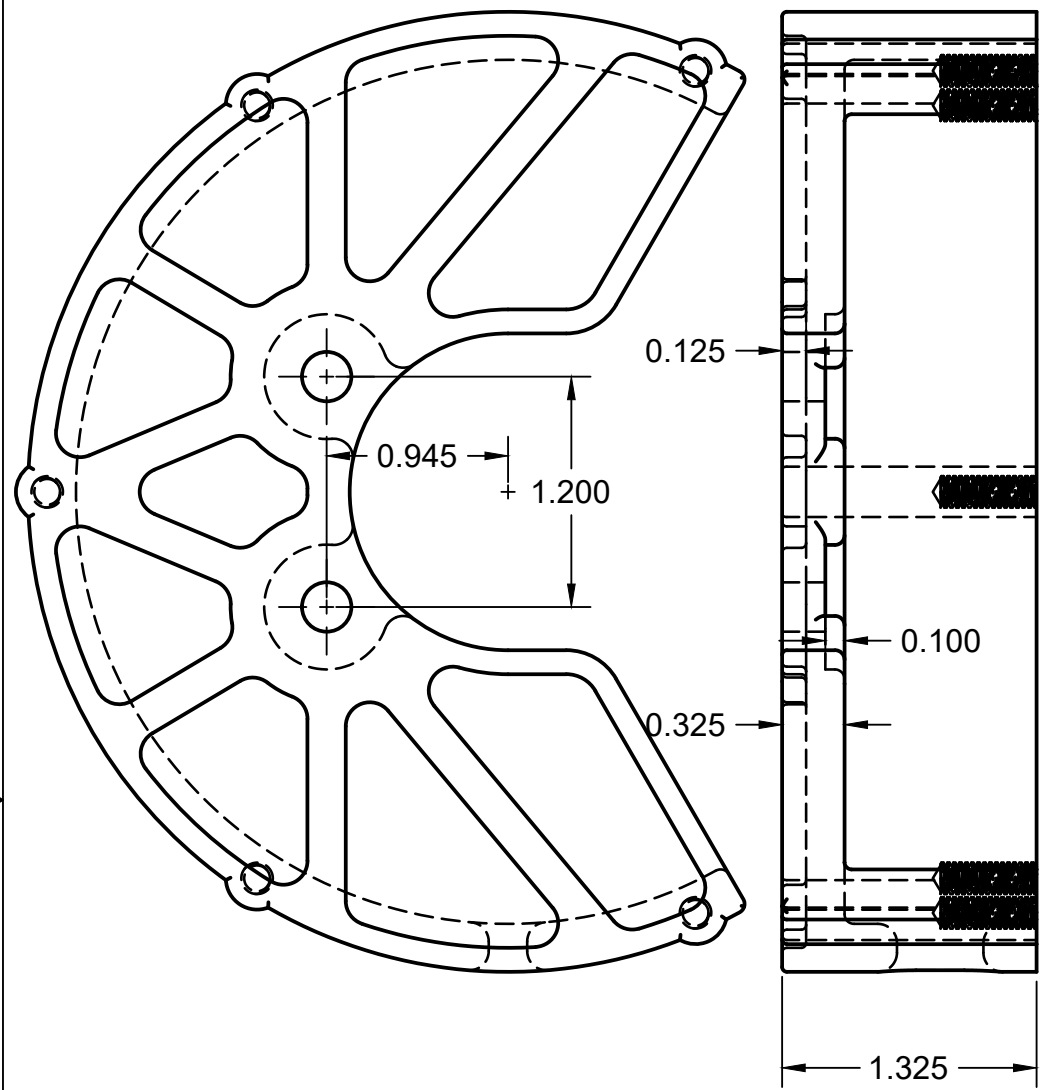
### 3/8" Arbor Flange



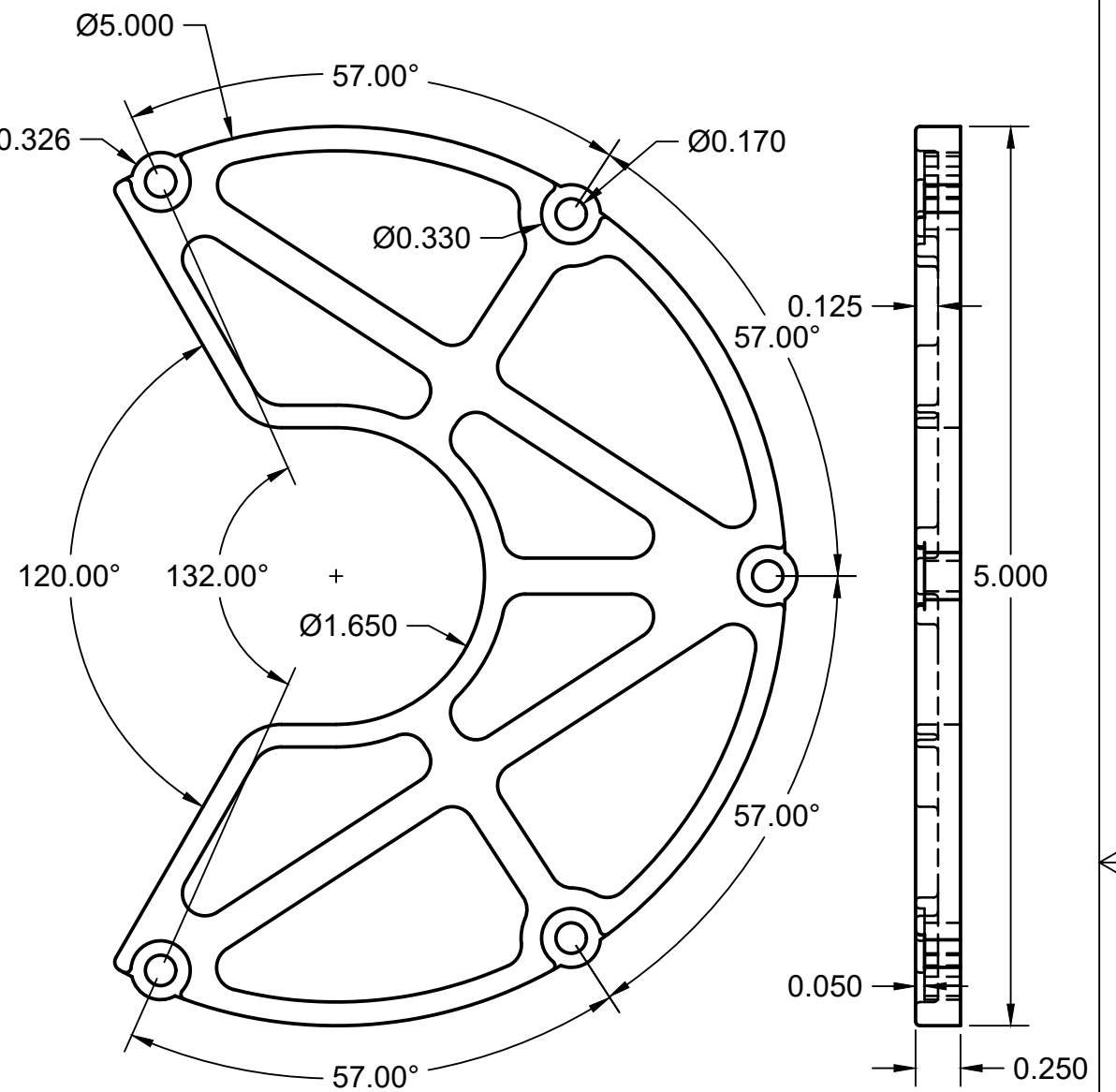
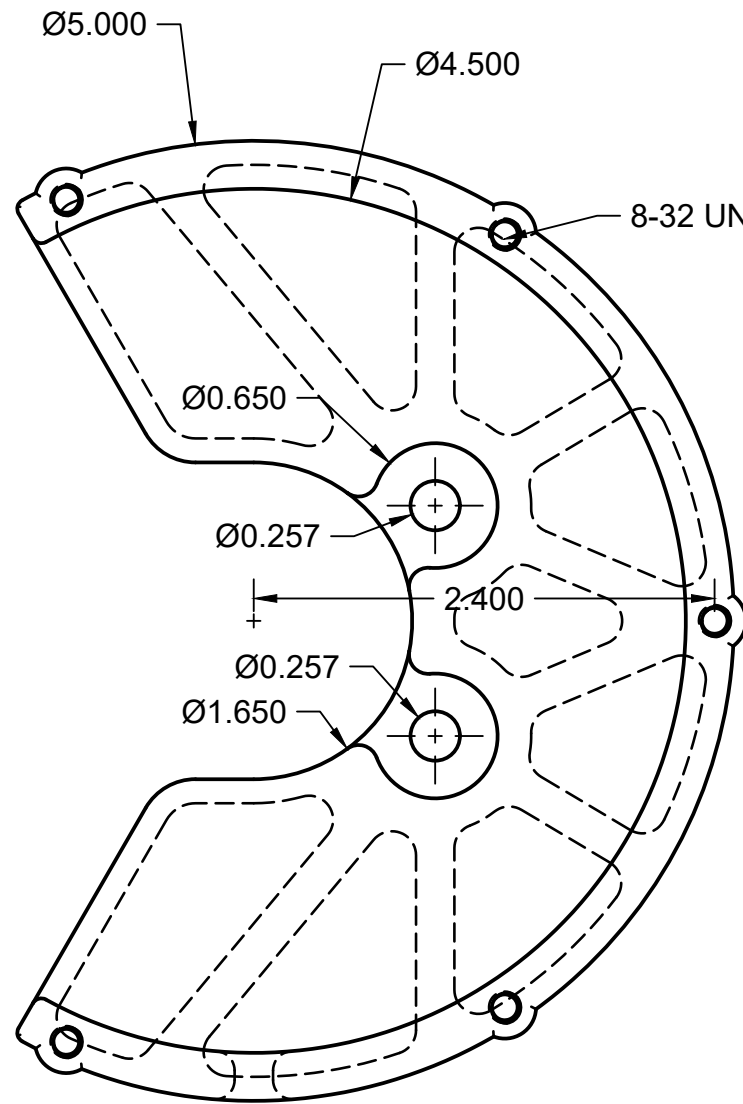
PROJECT  
**CLOUGH42 Toolpost Grinder**

TITLE  
**Wheel Arbors  
and Drawbar**

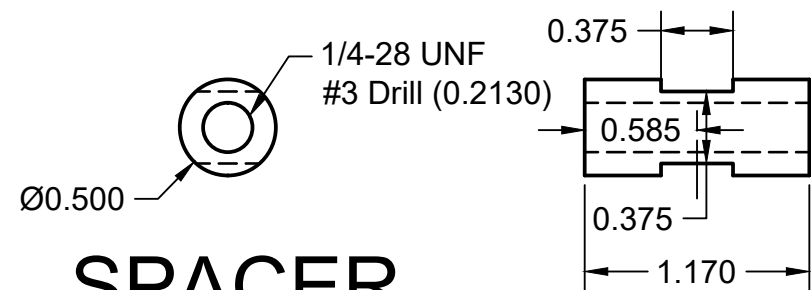
|                              |           |        |           |     |
|------------------------------|-----------|--------|-----------|-----|
| APPROVED                     | SIZE      | CODE   | DWG NO    | REV |
| CHECKED                      | B         |        |           |     |
| DRAWN James Clough 8/12/2017 | SCALE 1:1 | WEIGHT | SHEET 6/7 |     |



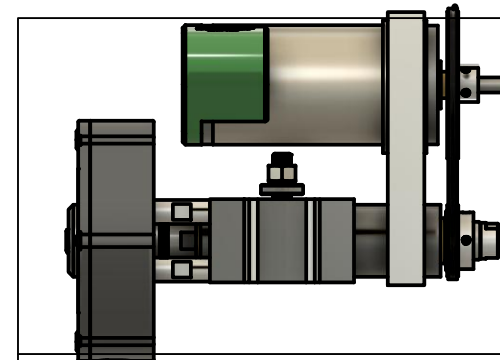
**GUARD**



**COVER**



**SPACER**



PROJECT  
**CLOUGH42 Toolpost Grinder**  
 TITLE  
**Wheel Guard**

|                              |           |        |           |     |
|------------------------------|-----------|--------|-----------|-----|
| APPROVED                     | SIZE      | CODE   | DWG NO    | REV |
| CHECKED                      | B         |        |           |     |
| DRAWN James Clough 8/12/2017 | SCALE 1:1 | WEIGHT | SHEET 7/7 |     |